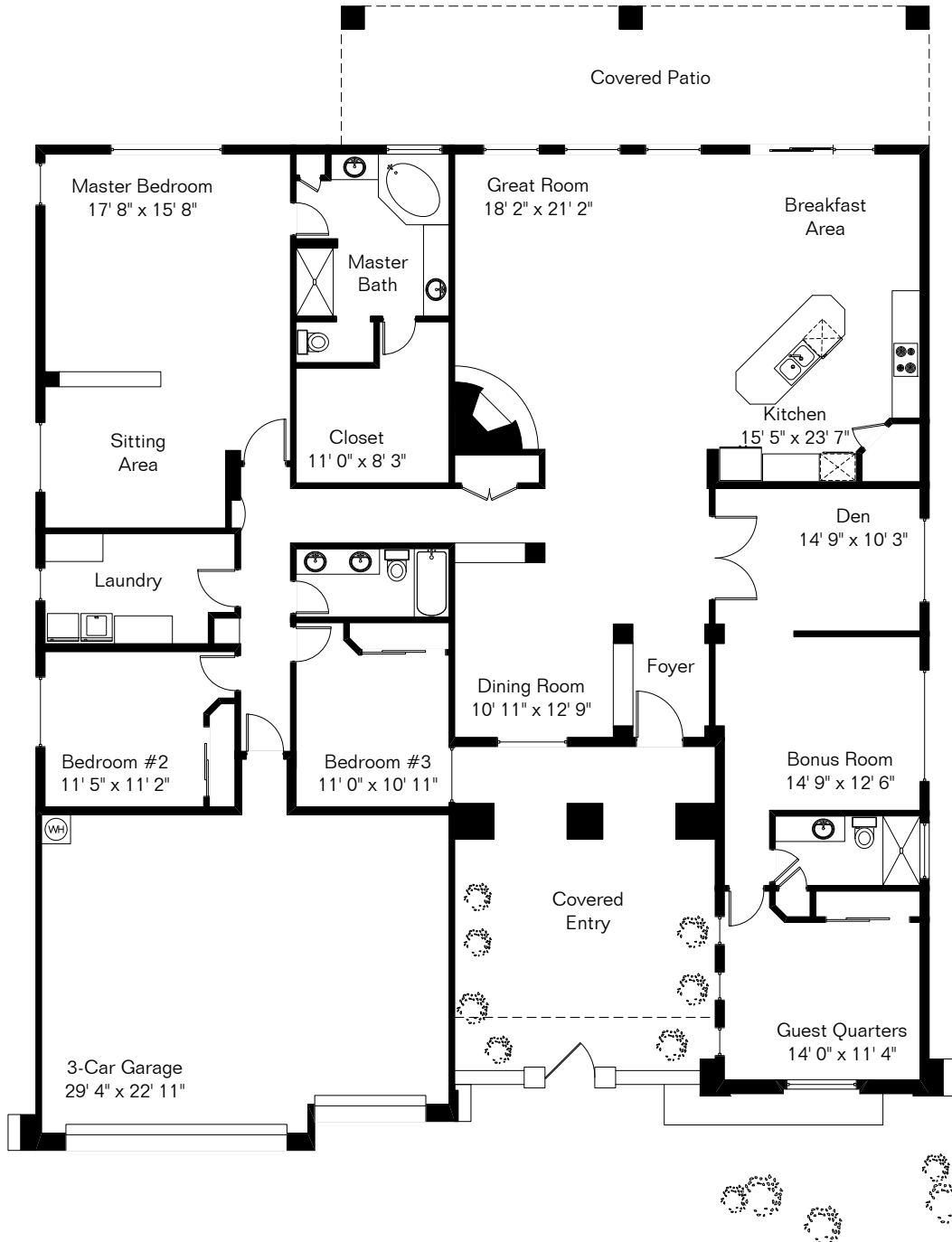


The square footages and room size information are deemed to be reliable but are not guaranteed and should be independently verified. This drawing is for marketing purposes only.

12642 N Piping Rock Rd

Presented by Pam Treece
Long Realty Company
(520) 275-2664



Living Area 3,306 Sq Ft
Garage 721 Sq Ft

Site Visit September 2020

0 ft. 6 ft. 10 ft. 20 ft.



Copyright 2020 Floor Plans First! LLC
All Rights Reserved.

Floor Plans First!
See the Floor Plan First!

FloorPlansFirst.com™
(520) 881-1500